



---

# CMTrends

---

2012 Conference

San Diego, CA  
August 13-15

**Presentation Abstracts  
& Speaker Biographies**

---

# CM Trends

---

2012 Conference

## Scott Altman, ASRC Research & Technology Solutions

“Reaching for the Stars: How CM Makes it Happen”

### **SPEAKER BIOGRAPHY**

Scott Altman, former NASA Astronaut, was the pilot on STS-90 (1998) and STS-106 (2000), and the mission commander on STS-109 (2002) and STS-125 (2009). Following two years as Shuttle Branch Chief for the Astronaut Office and lead for the Cockpit Avionics Upgrade, he was assigned on temporary duty to NASA Headquarters as Deputy Director, Requirements Division of the Exploration Systems Mission Directorate. On returning to Houston, and following STS-125, he served as the Chief of the Exploration Branch of the Astronaut Office. Altman has logged a total of over 51 days in space. Altman retired from NASA in September 2010 to join ASRC Research and Technology Solutions.



### **PRESENTATION ABSTRACT**

Scott Altman, CDR of STS 125 and the final Hubble Servicing Mission, led a team of astronauts, scientists, engineers and staff located across the country in preparing and executing one of the most challenging space missions ever attempted. Beginning with numerous challenges to repair strategies, timelines and stowage and culminating with on orbit contingencies, configuration management and attention to detail were the cornerstones that the success of the entire mission was built on. Scott will talk about how exceptional preparation and real time support from a wide network of agencies was all coordinated to culminate in the deployment of the Hubble Space Telescope, fully refurbished and repaired and at the peak of its scientific potential.

---

# CM Trends

---

2012 Conference

## Winfred Battle & James Winbush, Federal Aviation Administration

“FAA Enterprise Configuration Management Supporting  
NextGen Initiatives”

### SPEAKER BIOGRAPHIES

**Winfred Battle** is a Program Manager with the Federal Aviation Administration. He has over 25 years of experience in project and program management. He received a BS degree in Civil Engineering from Syracuse University in 1981, leading to jobs at the Los Angeles County Department of Public Works, the U.S. Army Corps of Engineers, the Corps' Baltimore District Office, the Federal Aviation Administration (FAA) and Verizon Communication.

Win rejoined the FAA in 2003 to work in the Enterprise Configuration Management organization as an engineer. He was tasked with managing the deployment of WebCM, the agency's first automated tool for performing change management processing for National Airspace System (NAS) assets. Win is currently the Program Manager for CM Automation, the new approach to the application of CM at an enterprise level.

Over the years Win has received numerous awards for his achievements. He has a Masters in Business Administration from the University of Maryland (1989), a Masters in Systems Engineering from the Stevens Institute (2011), and is currently working on his PhD in Organizational Leadership Development at the University of Maryland-Eastern Shore.

**James Winbush** joined the Federal Aviation Administration (FAA) in 1991 and has supported FAA Configuration Management and Systems Engineering efforts over the past 8 years. He is currently the National Airspace System Configuration Control Board (NAS CCB) Secretariat. He is also responsible for enterprise configuration management (CM) monitoring/oversight, CM process initiatives and provides support to CM policy and automation requirements development. James is a graduate of the University of Maryland where he obtained a Master of Science degree in Technology Management. He also holds a Bachelor of Science degree in Mechanical Engineering from the University of Maryland, a Bachelor of Science degree in Physics from Salisbury State University, and CM certification from the Configuration Management Process Improvement Center (CMPIC).

### PRESENTATION ABSTRACT

NextGen is a comprehensive overhaul of our National Airspace System (NAS) and represents the FAA's vision for the next 15 years. This wide-ranging initiative will transform the NAS by using 21st century technologies, such as satellite navigation and automation, to ensure it meets future safety, security, capacity, efficiency, and environmental needs. The resulting system will be dynamic, scalable, networked, and fully digital. NextGen will essentially provide air travel that is more convenient and dependable, while ensuring your flight is as safe, secure and hassle-free as possible. This presentation provides an enterprise level perspective on FAA configuration management process and related technology initiatives in support of NextGen.

---

# CM Trends

---

2012 Conference

## Peter Bilello, CIMdata

“CM, PLM, and Systems Engineering: What do all of these have in common?”

### **SPEAKER BIOGRAPHY**

Peter Bilello, President of the management consulting and research firm CIMdata—an internationally recognized authority on Product Lifecycle Management (PLM), has more than 24 years of experience in the development of business-enabling information technology (IT) solutions for research, engineering, and manufacturing organizations worldwide. He has held various positions in Product Lifecycle Management (PLM) analysis, selection, implementation, and training, CAD/CAM/CAE/CIM implementation and management, synchronous and lean manufacturing consulting, software engineering, and general data management strategy development and support. He has authored numerous papers and research reports on PLM and related topics. His articles, commentaries, and perspectives have appeared in publications throughout the United States, Europe, and Asia.

Mr. Bilello has been directly involved with the selection, consulting, integration, and implementation of large-scale PLM solutions. He has spoken on a number of different product lifecycle management-related topics in Europe, North and South America, the Middle East, Africa, and Asia.

Mr. Bilello’s university education includes a Bachelor of Science degree in Computer Science with a minor in Physics from the California State University, Fullerton, and a Master of Science in Engineering degree in Manufacturing Systems Engineering from The University of Michigan.

### **PRESENTATION ABSTRACT**

Many believe that configuration management (CM), product lifecycle management (PLM), and systems engineering are separate initiatives; separate topics that don’t really interact and aren’t really related. Unfortunately, this belief couldn’t be further from the truth. These initiatives should have, must have, a significant level of interaction. They are actually highly interdependent and must be considered in a holistic manner so that the company implementing them can maximize their return on investment. Without doing so, process and technology implementation sub optimization is highly likely. This presentation will define and discuss these highly interdependent initiatives and how they can best be implemented to maximize benefit.

---

# CM Trends

---

2012 Conference

## Paul Brouwers, Air Warfare Destroyer Systems Center

“From Bouncing Bomb to eBOM: A Historical Perspective on Product Definition”

### **SPEAKER BIOGRAPHY**



Paul Brouwers is currently employed on the New Air Warfare Destroyer program for the Royal Australian Navy, leading a team of CM professionals managing the configuration for the Combat System. Paul has worked within the Defence Industry for over 40 years in many different Engineering roles, commencing with the Defence Science and Technology Organisation where he received his earliest qualification. He first took an interest in CM in 1993 whilst employed as a Designer for the Nulka Hovering Decoy, and in 1998, as Chief Draftsman for BAe Military Vehicles and Manufacturing, was given the added responsibility for Configuration Management. Over the next 12 years he was involved in a number of major Defence projects including

AEW&C and M113 fleet upgrade. He was the Project manager for the implementation of an eMatrix based PLM system for Tenix Defence and in 2008 took on the role of Senior Business Analyst for the Windchill PLM implementation project at BAe Systems Australia. Paul is married with two sons and three grandchildren and enjoys studying classical organ, riding his classic motorcycle and pampering his Jaguar cars.

### **PRESENTATION ABSTRACT**

The presentation aims to look at how product definition has evolved from simple 2D drawings to modern day PLM systems that capture vast amounts of data, and raises the question – Are we over or under defining our products today. We will seek to identify shortfalls in modern day methods and how to capture data that may otherwise be “lost”, and also identify where we may be over defining our products and identify efficiencies that could possibly be made.

It is planned that this will be an interactive session with audience participation so that we may collectively learn from each delegate’s experiences.

---

# CM Trends

---

2012 Conference

## Giany Bruno, Mectron Engenharia Indústria e Comércio S.A.

“The Configuration Management Process throughout a  
Systems Engineering Lifecycle”

### **SPEAKER BIOGRAPHY**

Giany Bruno has been the Configuration Coordinator for Mectron EIC SA since 2009. He is currently the leader of Configuration Management department and he is the CCB coordinator for the Anti-Radiation Missile Program. He is also responsible for the PLM implementation at Mectron. Giany is graduated in Accounting (Unifev, 1998), Electrical Engineering with emphasis in Telecommunications (PUC-Campinas, 2005) and has an Specialization in Aeronautics Engineering, course provided by Embraer with ITA (Aeronautics Technological Institute) as a partner. He has received certifications from the Configuration Management Process Improvement Center (CMPIC).

### **PRESENTATION ABSTRACT**

The development process, including Configuration Management, is applied even in pre-series and series, i.e, in the beginning stages of the life cycle, and it causes conflicts of prioritization between development and production of the Lab Models and Functional Models. The focus of this presentation is how to optimize the Configuration Management activities throughout a general life-cycle based on Systems Engineering in order to minimize these conflicts, but keeping the minimal control of the changes.

---

# CM Trends

---

2012 Conference

## Dane Dungee, Harris Corp.

“Foundations of a Successful Configuration Manager”

### **SPEAKER BIOGRAPHY**



Dane Dungee is currently the Configuration/Data Management Engineering Manager for Harris Corporation in Melbourne FL. He has over 20 years of Configuration Management, Logistics Support, and Software Design experience with several different customers to include: the US Armed Forces, Census Bureau, FAA, Commercial Customers, etc... Prior to Harris, Dane spent 10 years in the US Navy and several years with Computer Sciences Corporation and Lockheed Martin, where he has worked on systems that are currently in space, deployed overseas, spread across the US as well as systems at sea. He graduated in 2005 from the University of Mary Washington with a BA in Computer Sciences and more recently from the University of Central Florida with a Masters in Engineering Management.

Harris Corporation is a communications company providing Assured Communications for many different customers from Federal and local governments to commercial broadcasting and the Department of Defense. Dane manages the entire Configuration/Data Management Staff for the Government Communications Systems Division and is responsible for the CM/DM discipline knowledge base within the organization. His expertise covers the gambit of Software CM, Hardware CM, Systems CM and Data Management.

### **PRESENTATION ABSTRACT**

This discussion will be focused on What is the Role of CM on a Project/Program Team. How does CM impact the effectiveness of a project team. What is the key to success for Support Personnel and Configuration Managers.

---

# CMTrends

---

2012 Conference

## Steve Easterbrook, CMPIC LLC

“The Business Case for Configuration Management”

### **SPEAKER BIOGRAPHY**



Steven Easterbrook is the president and lead instructor of CMPIC LLC. He has had over 12 years experience as a CM manager in both government and commercial organizations, and over 19 years experience as an instructor/consultant in configuration management, receiving incredibly high reviews and recommendations.

Steve has conducted assessments of both government and commercial organizations, one of which being NASA's international space station program. He has presented at various CM & related conferences, sometimes as keynote speaker, and had the honor of being selected to speak to the FAA as part of FAA's Distinguished Lecturer series.

Steve has a BS from Cornell University and an MBA in Management from Bryant University. He is CMPIC Certified, CMII Certified, and a member of ACDM, NDIA, and ASQ.

### **PRESENTATION ABSTRACT**

This presentation will present a business case for CM and will discuss why configuration management is an important, essential, value added management process no organization can do without.



---

# CMTrends

---

2012 Conference

## Lisa Fenwick, CMstat

“Implementing CM: Where do I begin?”

### **SPEAKER BIOGRAPHY**

Lisa Fenwick has been employed by CMstat - a leading provider of COTS Configuration Management and Contract Deliverables Management software – in a number of roles for the past 17 years. With a degree in Engineering from the University of Maryland and an extensive background in Mechanical Engineering and Configuration Management, she has provided support to various departments including Sales/Marketing, Training, Customer Support, Implementation, and Consulting and is currently the Vice President of Product Development. In the past ten years, Ms. Fenwick has become very involved with new product development and standards compliance. She is a member of the Association of Configuration and Data Managers (ACDM), certified in Configuration Management (CMII) by the Institute of Configuration Management, holds CMPIC CMAssessor Certification and is a member of Tech America serving as a reviewer for both Configuration and Data Management standards.



### **PRESENTATION ABSTRACT**

The process of implementing Configuration Management for a new or existing project will be discussed. Some questions that will be answered include: What are the necessary steps and consideration beyond creating the CM Plan? How do I define the necessary levels of CM control? How do I determine the appropriate complexity of change review? What should our change incorporation procedures be? How do I best roll out CM information and functions to my users?

---

# CM Trends

---

2012 Conference

## Marcia Gaertner & David Lien, Nexteer Automotive

“Does CM Work During Rapid Company Growth?”

### **SPEAKER BIOGRAPHY**

**David Lien** is the Manager of Central Engineering at Nexteer Automotive in Saginaw, Michigan. He has 35 years of industrial experience with General Motors, Delphi Automotive Systems, and Nexteer Automotive, including engineering, manufacturing, quality, strategic planning, program management, and customer resident assignments. His current position includes responsibility for Engineering Systems and Processes, Intellectual Property, CAD Design, Vehicle and Laboratory Validation testing, and the Acoustics and Vibration Center. He is also co-champion for the enterprise Configuration Management process, which includes responsibility for the implementation and continuous improvement of the process across a global footprint of 20 manufacturing plants and 19 engineering and customer support sites.

**Marcia Gaertner**, as a Training Coordinator, focuses on the continuous improvement of the CM process. She delivers training, provides system support, maintains internal web communications, and, on-going procedure improvements. She has 15 years of experience working with automotive companies including General Motors, Delphi Automotive Systems, and Nexteer Automotive.

### **PRESENTATION ABSTRACT**

Nexteer Automotive is a tier one automotive supplier committed exclusively to wheel-to-wheel steering and driveline systems. With over 100 years of history, Nexteer continues to meet the needs of customers with new products and technologies. In 2010, General Motors sold Nexteer to China based Pacific Century Motors. This new ownership has provided growth opportunities with customers globally, and Nexteer is experiencing rapid growth with its green technology portfolio of Electric Power Steering systems that improve vehicle fuel economy, steering, and handling.

Our Configuration Management team is supporting this technology shift and rapid business growth with process improvements, internal website communications, and a new approach to training.

---

# CM Trends

---

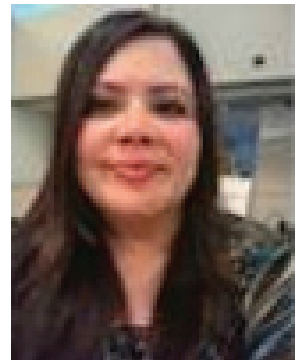
2012 Conference

## Tanya Garza & Dianna Groce, MRI Technologies

“CM 101: Removing the Blinders”

### SPEAKER BIOGRAPHY

**Tanya Garza** has worked in the aerospace industry for over 16 years. She is currently employed by MRI Technologies. For the majority of her career, she provided Configuration and Data Management support for the Flight Software Primary Avionics Software System group, in addition to the Cockpit Avionics Upgrade and Orion programs. Ms. Garza transitioned from the software world to the hardware world when she joined the One EVA program over a year ago as the Configuration and Data Management Lead. Ms. Garza is responsible for controlling/tracking the configuration of Crew and Thermal Systems Division (CTSD) assigned Extravehicular Mobility Unit (EMU) hardware



**Dianna Groce** is the Configuration and Data Manager of the One EVA Program led by Hamilton Sundstrand in Houston, Texas. She has worked for MRI Technologies in the aerospace industry for 26 years, providing configuration and data management support to various programs including Shuttle Flight Software, Orion and Constellation. Ms. Groce has been supporting the One EVA program for 2 years and is currently responsible for overseeing the configuration and data management of activities on the One EVA Program.

### PRESENTATION ABSTRACT

The One EVA Program plays a significant role in the success of Extravehicular Activities (EVAs) or space walks. One EVA is responsible for the Extravehicular Mobility Unit (EMU) which provides environmental protection, mobility, life support and communication for ISS crewmembers as well as the tools required to support activities being performed by the crew on orbit. It is a complex program with diverse suppliers at various locations following their own procedures and using their own databases. When we came aboard the One EVA Program, the supplied procedures were meticulously followed as expected for any human rated program. Now that we are more familiar with the processes, our team has found opportunities to improve the CM operation. The definition of roles and responsibilities are being enhanced and additional rigor is being incorporated into the CM processes. With the critical need to accurately identify the configuration of hardware, the importance to have robust procedures is vital.

---

# CM Trends

---

2012 Conference

## Larry Gurule, i-Infusion/ Imagine Technology

“Capturing, Organizing and Managing for  
Benefit”



### **SPEAKER BIOGRAPHY**

Larry Gurule has more than 30 years of hands-on and industry consulting experience in data driven environments including retail, distribution, supply chain, manufacturing and service/process. Larry has successfully deployed processes and technology for Product Lifecycle Management (PLM), Order Management, Project Collaboration, Enterprise Resource Planning (ERP) and numerous other processes essential to the local and global operations of the world's largest companies. Larry also has over 20 years of CM and related experience in government and commercial organizations.

Larry has lectured to, and/or consulted with, hundreds of commercial and government organizations on the subject of CM process improvement, as well as conducted CM assessments for some very high profile commercial and government organizations. In addition, Larry has specialized training including Project Management, Configuration Management Professional Certification, Lean Six Sigma, Lean Enterprise, Lean Bill of Materials, Balanced Score Card and Activity Based Costing methodologies, authored articles, papers and presentations on Operational Process Improvement, Lean Bill of Materials and management methodologies. Larry is a CMPIC Associate and instructor for CMPIC Course 6-Configuration Management Industry Standard ANSI/EIA-649B Principles, Course 7- Configuration Management Assessor Certification, and Course 9-Applications Certifications, Configuration Management Standards & Practices Update.

Larry holds a BS/MS Mechanical Engineering, University of Colorado, CMPIC Certification, CMII Certification, CM Lead Assessor Certification, CM Professional Certification from both ICM and CMPIC

### **PRESENTATION ABSTRACT**

Despite the best efforts of our clients over the years and their adoption of productivity initiatives like CM, ISO, CMMI, ITIL, Six Sigma, Lean, TQM, etc..., as well as their adoption of technology solutions like SharePoint collaboration environments, Product Lifecycle Management solutions (PLM) and Manufacturing Resource Planning (MRP)/Enterprise Resource Planning (ERP) solutions, Supply Chain Management (SCM), etc... , the goal of being a continuously improving and profitable organization is still a dream and fire fighting, in various degrees, is still the norm at many organizations both private and public.

---

# CMTrends

---

2012 Conference

## Cynthia Hauer, ACDM

“Data Management: From Data Clerk to Data Scientist!”

### **SPEAKER BIOGRAPHY**

Cynthia Hauer founded Millennium Data Management, an independent, woman-owned business, in 1999, with the goal of promoting a robust and important vision for data which is generated or managed by contractual activities. With over 27 years of experience in the field of data management, Ms. Hauer has focused a great deal of that time on the role of Data Management and Data Managers in the commercial enterprise and government infrastructure, providing thought leadership and vision in the integration of data, its users, and their business processes.

During her career, Ms. Hauer has authored and presented more than 50 technical papers on configuration and data management. She also served as the co-lead for the team that developed the ANSI/GEIA-859, Consensus Standard for Data Management.



### **PRESENTATION ABSTRACT**

Data management has come a long way since its inception as an adjunct to CM, in the defense arena. Today, it is practiced across virtually every discipline and area, in all segments of specialty. This presentation provides an update, and a window into DM, today - and where it's heading in the future.

---

# CM Trends

---

2012 Conference

## Mitch Kaarlela, Lockheed Martin

“Don’t Design by Change Paper”

### **SPEAKER BIOGRAPHY**

Mitch Kaarlela is a 29+ year employee with Lockheed Martin Aeronautics (heritage General Dynamics & Lockheed). He has Configuration Management and Contracts experience on several major domestic and international military aircraft programs. Mr. Kaarlela is a LM Corporate resource for programs needing specialized Configuration Management trouble-shooting and assistance. He is presently assigned to the Systems Engineering/Configuration Management Competency Center. Mr. Kaarlela holds a Bachelor’s Degree from the University of Texas and Master’s Degree from Texas Christian University. He is a TechAmerica CM Technical Fellow, and is an officer with TechAmerica’s Systems, Standards and Technology Committee (SSTC). Mr. Kaarlela is a member of the prime authoring team for EIA-649, the US Industry Standard for Configuration Management, and presently holds a CMPIC Masters certification. Mr. Kaarlela is married and has three children.



### **PRESENTATION ABSTRACT**

This presentation is aimed at assisting the Configuration Management (CM) leader or practitioner with insight and actions for projects where cost and schedule pressures are leading to shortcuts in the design release process. It describes, identifies and quantifies the implications to CM. Listeners are given practical ideas for addressing these type scenarios.

---

# CM Trends

---

2012 Conference

## Alan Kiraly, Bentley Systems

“The Role of CM in Cyber Security”

### **SPEAKER BIOGRAPHY**



Alan Kiraly is VP of Engineering Information Management Services at Bentley Systems, Incorporated.

Alan Kiraly currently oversees the development and delivery of Bentley's information management servers and services, including AssetWise and ProjectWise. Mr. Kiraly has been actively involved in engineering and operational information management his entire career. He has held a variety of executive management positions in product marketing, development, and project services for leading companies in the software industry. Mr. Kiraly speaks regularly at industry conferences on the merits of using configuration and information management best practices to achieve operational excellence.

### **PRESENTATION ABSTRACT**

Cyber terrorism is a real threat that requires a thorough defense strategy. Cyber assets include more than desktops, laptops and smart phones – they span the digital devices that control systems in our utility infrastructure. Some industries, such as the nuclear power industry, have a series of milestones they must meet to comply with new cyber security regulations. This presentation illustrates the key role CM plays not only in initial cyber secure assessments, but in maintaining the security into the futures, ensuring compliance to these new regulations in the nuclear industry and beyond.

---

# CMTrends

---

2012 Conference

## Ron Kunz, L-3 Communications

“What Happens When We Don’t Use Proper CM”

### **SPEAKER BIOGRAPHY**

Ron Kunz has over thirty years of experience in Engineering and Management and Executive roles. He is currently serving as Vice President and General Manager of the L-3 Communications Applied Technologies Jaycor Group. He formerly served as President of General Atomics - ESI, Program Director of the \$500M+ EMALS and AAG programs. He has served at two National Labs and held other leadership and engineering positions within the Aerospace and Nuclear Industries. He has a BS degree in Mechanical Engineering and MBA both from the University of Utah.



---

# CM Trends

---

2012 Conference

## James Leonard, General Atomics

“Done, Finished or Complete? Life Cycle Configuration Status Accounting”

### **SPEAKER BIOGRAPHY**



Jim Leonard is currently the Configuration Engineering Manager for the Reconnaissance Systems Group of General Atomics Aeronautical Systems, Inc. (GA-ASI). He has 29 years of configuration management and consultant experience spanning across DoD and commercial customers. Prior to joining GA-ASI, Jim spent 28 years in leadership roles with IBM and Lockheed Martin. He is a TechAmerica Industry Vice Chairman of the G-33 Committee on Configuration Management. Jim is currently CSA section lead for the GEIA Handbook Revision B. He graduated in 1983 with a B.S. in Logistics Management and obtained an M.A. in Organizational Management in 1998. During his career, Mr. Leonard has served as co-lead and author contributor to MIL-STD-973, ANSI/ESI-649 revisions and has been involved in producing several configuration management technical papers and bulletins.

GA-ASI is a leading manufacturer of Remotely Piloted Aircraft (RPA), tactical reconnaissance radars, and electro-optic surveillance systems, including the Predator®/Gray Eagle® RPA series and the Lynx Multi-mode Radar.

General Atomics Corporation is one of the world's leading resources for high-technology systems development ranging from the nuclear fuel cycle to remotely operated surveillance aircraft, airborne sensors, and advanced electric, electronic, wireless and laser technologies.

### **PRESENTATION ABSTRACT**

Configuration Status Accounting (CSA) can be the pulse and heart of managing a successful business. CSA historically focuses on snap shots of time, but technology now enables users to access real time dynamic information from the office, home, beach or hallway. This presentation provides a look into how CSA can boost the image and effectiveness of your configuration management organization.

---

# CM Trends

---

2012 Conference

## Marc Lind, Aras Corp.

“Integrated Requirements Management for Systems Engineering”

### **SPEAKER BIOGRAPHY**

Marc Lind is a Sr. Vice President at Aras Corporation with over 17 years in configuration management, product development, manufacturing, and supply chain operations. At Aras Mr. Lind is responsible for the enterprise-wide CM strategy, global marketing and strategic alliances along with corporate responsibilities. Prior to joining Aras, Mr. Lind was an executive with PartsDriver, an automotive industry supply chain provider for inventory reduction and forecast improvement. Previously at Analog Devices, a leading global provider of semiconductors and electronics, he was responsible for configuration & data management and quality systems. Earlier in his career, Mr. Lind was a consultant on the Toyota Production System, Lean methodologies, and quality standards. Mr. Lind holds a BBA in Operations Management from the University of Massachusetts at Amherst Massachusetts, is a member of APICS, AME and the PDMA, and is a frequent presenter on Configuration Management practices.



### **PRESENTATION ABSTRACT**

Products and systems complexity continues to increase while customer demands are changing much more frequently than they were even five years ago. On average Aerospace programs start with several thousand requirements at the system level and several hundred thousand at the lowest level with a comparable number of verification and test items. Tracing requirements across an integrated configuration that includes mechanical, electrical, wiring, software, firmware and other product-related items to validate satisfaction and compliance has become impractical and unmanageable with stand-alone system silos. The inherent risks associated are forcing companies to fundamentally rethink their approach to systems engineering. Find out how breaking down the walls and bringing together requirements management and configuration & change management processes across the enterprise enables the design and delivery of our next generation systems.

---

# CM Trends

---

2012 Conference

## Leslie Miller, GE Energy

“Lessons Learned from Aligning Configuration Management Across a Global Enterprise”

### **SPEAKER BIOGRAPHY**

Leslie Miller has been the Configuration Management Engineering Manager for General Electric Energy Thermal Products since 2009. He has worked for General Electric for over 12 years implementing and supporting products that are responsible for 25% of the world's energy production. Leslie has over 30 years of systems engineering experience in power generation and aircraft engine design and development.

### **PRESENTATION ABSTRACT**

The thermal products division of General Electric Energy has recently implemented a single PLM instance for 17,000 users headquartered in 10 countries. The effort required replacement and consolidation of different change and product data management standards, practices and systems from businesses with diverse histories and opinions of configuration management. The presentation will discuss the lessons learned during the organizational and system changes.



---

# CM Trends

---

2012 Conference

Tina O'Dell, QinetiQ N.A.

“Empower and Mentor: Change Management Leadership”

## **SPEAKER BIOGRAPHY**

Tina O'Dell is a 13 year veteran of the United States Marine Corps. During her service in the United States Marine Corps, Ms. O'Dell was responsible for managing Marines and maintaining the United States Presidential Helicopter fleet. Since leaving the United States Marine Corps in 1996, she has supported several United States Department of Defense Acquisition Programs as a Senior Systems Engineer. Ms. O'Dell's responsibilities have included Test & Evaluation, Requirements Management, International Program Management, and Configuration Management. Ms. O'Dell is currently the Configuration Management Technical Director for QinetiQ North America, Systems Engineering Group, Defense Solutions. In addition to her Technical Director duties, she is also the Lead Engineer in support of the United States Marine Corps development and procurement activities for Logistics Modernization. Ms. O'Dell has completed her certifications as a CMPIC Certified CM Professional and CM Assessor from CMPIC and the University of Houston.



## **PRESENTATION ABSTRACT**

Tony Dungy and Tim Tebow are two of the NFL's most recognizable players. They are open about their faith; are leaders among men; and have experienced many trials which have shaped their lives. In today's professional environments, trials and change are ever present and they are constant reminders that thoughtful and resourceful leadership is a must to ensure success when they knock on our doors. Ms. O'Dell will examine the leadership traits of these two men as they relate to change management and how to provide empowerment and mentorship to the workforce during times of change.

---

# CMTrends

---

2012 Conference

## Jerry Pyka, University of Houston

“The Future of CM and Academia”

### **SPEAKER BIOGRAPHY**



Jerry Pyka serves the University of Houston as Assistant Dean of Outreach for the College of Technology, and for the University of Houston in Educational Technology and University Outreach (ETUO). He is responsible for creating and maintaining articulation agreements with local area, domestic, and international institutions of higher education, as well as creating and maintaining relationships with businesses and Chambers of Commerce. Jerry also teaches various junior and senior level courses for the department of Information and Logistics Technology in the College of Technology. His administrative duties include overseeing academic operations for the College of Technology at the University of Houston's satellite campuses. Jerry also serves as a strategic planner for the College of Technology and ETUO to determine student needs.

Jerry was previously employed in aerospace, and petroleum industries as Quality Systems Manager and Configuration Manager respectively. He is RABQSA ISO 9001:2000 / TS16949:2002 certified as a lead auditor, and is certified as an ISO 9001:2000 Trainer/Coach. He recently assisted The Lighthouse of Houston (a manufacturing company in Houston that employs the visually impaired) to achieve ISO 9001:2008 certification. In 1996 he received his CMII certification. In 2008 he received his CMPIC certification in Courses 1-4 and Course 5. He is currently pursuing his doctorate in Higher Education Administration at the University of Houston and is due to graduate in May 2013.

### **PRESENTATION ABSTRACT**

CM as we know it is typically compartmentalized in different departments such as engineering, quality, or project management. It is something that is typically taken for granted. For CM to stand out as a function that is necessary and one that is creditable and valuable, it needs to be viewed as one that is academically significant. This presentation will discuss ways in which CM may be proposed to current and future management and leaders.

---

# CM Trends

---

2012 Conference

## Terry Quan, EBD Advisors, LLC

“Understanding the Strategic Value of Configuration Management in Mergers & Acquisitions”

### **SPEAKER BIOGRAPHY**

Terry Quan is the CEO of EBD Advisors, LLC. Terry has over 30 years of experience in engineering, configuration management, information technology, consulting, business development and enterprise system implementation. Terry's CM experience includes Manager, Configuration Management at a Commercial Nuclear Facility, VP of Consulting Services for Aras Corporation, CEO for the Configuration Management Group and an instructor for the Institute of Configuration Management. Terry has a BSME and MBA, both from Arizona State University.

### **PRESENTATION ABSTRACT**

Even with failure rates of 50-80%, mergers and acquisitions continue to be a main-stay strategy for many companies. M&A processes typically center around finance and legal considerations. Acquisition integration is often under estimated and underfunded resulting in disappointing performance, and in some cases the fatal demise, of the combined companies. Some experts believe M&A integration needs to address culture and communication; others believe IT needs to be included in M&A integration. This presentation will focus on the presenter's belief that configuration management needs to be included in M&A strategies and processes to more completely understand the target company and to more effectively integrate the operations and IT of the combined companies.

---

# CM Trends

---

2012 Conference

## Cary Rosson, InDyne Inc.

“CM in a Pure IT Environment”

### **SPEAKER BIOGRAPHY**

Cary Rosson is an eight year retired United States Air Force Veteran, who has 17 years' experience as a Security Policeman (Law Enforcement)/ Corrections Officer, and spent his last four years with the military working as a Senior Non-Commissioned Officer at the Vandenberg AFB Legal Office. Since his retirement from the military, he has worked supporting the 614th AOC/JSpOC in various roles, much of the time as a Senior Lead Systems Administrator on the sustainment team responsible for all information technology networks and systems. He also spent a short time supporting the Army's Missile Defense Agency's (MDA), Ground Based Mid-Course Defense (GMD) program as an Information Systems Security Officer. After returning to the 614th AOC, Cary has spent the last four years working as a Systems Administrator and more recently as the Configuration Manager for the multi-faceted IT systems that support and guide the decision making for the senior leaders at the United States' only Space Operations Center. Cary was born in Berkeley, California, and calls the Central Coast of California home. He is married to the former Kari Anne Dunham of Redlands, California (Oregon State University, Delta Delta Delta Sorority). Cary and Kari have two sons; Kristopher (San Diego State University, 2012, Sigma Chi Fraternity) and Curt (University of California, Irvine).

### **PRESENTATION ABSTRACT**

Configuration Management can be applied across the spectrum of manufacturing and production industries, but how does it apply to a pure IT environment; especially an IT environment in an operations center?

This presentation will address how the five pillars of Configuration Management are applied at the 614th AOC/ Joint Space Operations Center (JSpOC) at Vandenberg AFB, California. It will not address specific operational mission activities or requirements. Operations centers vary on their missions, capabilities, and configurations, which add to the challenges keeping 24/7/365 centers up and running. Planning, and identifying the configurable items is critical to insure that Configuration Managers can minimize the impact to the operators as well as operations when managing the changes that can occur day to day. Change Management should take into consideration all risks that can result in extended down time to mission essential systems or infrastructure, i.e., Schedule, Personnel, and Security which are samples of some of the areas that will require, at times, multiple analyses. The areas and the analyses of those areas will vary as well for each operational environment. Ultimately a balance must be struck between the necessity to affect change and the operational impact that will be sustained by the change(s). Working with multiple levels of IT offices and personnel make it imperative that Status Accounting, and Verification and Audit, are well understood practices throughout the organization that will be as natural a process as invoking the changes themselves. Success in the operations environment will require initial and continuing education, for staff at all levels, concentrated on the pillars of Configuration Management.

---

# CM Trends

---

2012 Conference

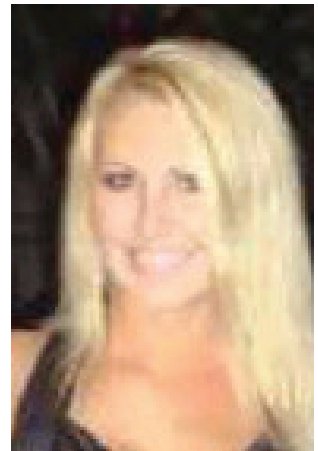
## Renee Sells, CGI Federal

### “Interface Management in a System-of-Systems Environment”

#### **SPEAKER BIOGRAPHIES**

**Renee Sells** is currently working for CGI Federal in Configuration Management for Systems Center Pacific Code 532 in San Diego. She previously was the Configuration Manager for the Program Management Warfare for Maritime Command and Control (MC2) System Division (PMW 150). She has base-lined multiple major software products and established CM division wide. Her efforts are instrumental in the success of capturing multiple configurations of systems within the division and the creation of process improvement in the engineering competency.

A graduate of San Diego State University and a Certified Paralegal (CP) through the University of California San Diego, Ms. Earhart’s professionalism, creativity and legal background has driven her to succeed in the configuration management field. Ms. Earhart received her Configuration Process Improvement Center (CMPIC) Certification in 2010 and her IT and Software Development Certification in 2011.



#### **PRESENTATION ABSTRACT**

In a time of fiscal conservatism, DoD programs are being asked to do more with less, with specific regard to maintaining strict Test and Evaluation policies to provide scrutiny and rigor in fielding suitable and effective solutions to the warfighter. Consequently, the US Navy is challenged with maintaining proper configuration management not only of their systems, but also that system’s interfaces to other systems, as a change in one program often triggers the need for change in several other connecting systems. With over 200 programs of record (PoR), Space and Naval Warfare Systems (SPAWAR) is meeting this challenge head-on by leveraging a COTS solution to provide impact assessment functionality, automatically triggering alerts of “suspect” interfaces and illustrating the cascade of changes that can potentially occur when one program implements a single change.



---

# CMTrends

---

2012 Conference

## Danielle Yockman, US Navy

“Doing the Hokie Pokey: The Product-Platform Paradigm”

### **SPEAKER BIOGRAPHY**



Danielle Yockman received a degree in Political Science in 1999, from Auburn University Montgomery. She has worked in the advertising industry, mergers and acquisitions, and bio-tech, before becoming a defense contractor, and now a Navy employee. She provides overarching configuration management policy and guidance for C4I shore sites around the world while participating as a member of the SPAWAR Configuration Management Team that provides significant input into the policy direction for Team SPAWAR.

### **PRESENTATION ABSTRACT**

Working in a hybrid environment managing both systems (of systems) and platforms provides a unique view of two sides of a single coin. The product platform paradigm is a way to explain how seemingly separate entities are really two halves of a whole. The concept is built on a foundation of basic CM functions and principles tailored to work within the Department of Defense environment. This paradigm is one of the key elements included in the new Team SPAWAR Life Cycle Configuration Management Organizational Standard Process developed by the SPAWAR Configuration Management Team.